
GARDNER DENVER®

3-1-514
6th Edition
March, 1998

GD 55T

3" STROKE

TRIPLEX PLUNGER PUMP

MODEL

TQC

DESIGN VERSION C

PARTS LIST

Gardner

Denver

MAINTAIN PUMP RELIABILITY AND PERFORMANCE WITH GENUINE GARDNER DENVER PARTS AND SUPPORT SERVICES

Gardner Denver® and OPI® genuine pump parts are manufactured to original tolerances and designed for optimum dependability. Design and material innovations are the result of years of experience with hundreds of different pump applications. Reliability in materials and quality assurance are incorporated in our genuine replacement parts.

Your authorized Gardner Denver and OPI distributor offers all the backup you'll need. A worldwide network of authorized distributors provides the finest product support in the pump industry.

Your local authorized distributor maintains a large inventory of genuine parts and he is backed up for emergency

parts by direct access to the Gardner Denver Machinery Inc. Master Distribution Center (MDC) in Memphis, Tennessee.

Your authorized distributor can support your Gardner Denver and OPI pump needs with these services:

1. Trained parts specialists to assist you in selecting the correct replacement parts.
2. Repair and maintenance kits designed with the necessary parts to simplify servicing your pump.

Authorized distributor service technicians are factory-trained and skilled in pump maintenance and repair. They are ready to respond and assist you by providing fast, expert maintenance and repair services.

For the location of your local authorized Gardner Denver and OPI distributor refer to the yellow pages of your phone directory or contact:

Distribution Center:
Gardner Denver Machinery Inc.
Master Distribution Center
5585 East Shelby Drive
Memphis, TN 38141
Phone: (901) 542-6100
Fax: (901) 542-6159

Factory:
Gardner Denver Machinery Inc.
1800 Gardner Expressway
Quincy, IL 62301
Phone: (217) 222-5400
Fax: (217) 224-7814

INSTRUCTIONS FOR ORDERING REPAIR PARTS

When ordering parts, specify Pump MODEL and SERIAL NUMBER (see nameplate on unit). The Serial Number is also stamped on top of the cylinder end of the frame (cradle area).

All orders for Parts should be placed with the nearest authorized distributor.

Where NOT specified, quantity of parts required per pump or unit is one (1); where more than one is required

per unit, quantity is indicated in parenthesis. **SPECIFY EXACTLY THE NUMBER OF PARTS REQUIRED.**

DO NOT ORDER BY SETS OR GROUPS.

To determine the Right Hand and Left Hand side of a pump, stand at the power end and look toward the fluid end. Right Hand and Left Hand are indicated in parenthesis following the part name, i.e. (RH) & (LH), when appropriate.

TABLE OF CONTENTS

	Page
Maintain Pump Reliability and Performance With Genuine Gardner Denver Parts and Support Services	1
Instructions For Ordering Repair Parts	1
Model TQC – Design Version C – Option Menu	3
Power End	4, 5
Low Pressure Cast Aluminum–Bronze Fluid Cylinder (General Service)	6
Low Pressure Block Steel Fluid Cylinder (Hydrocarbon Service)	7
High Pressure Block Steel Fluid Cylinder (General Service)	8
Stuffing Box, Plunger & 838 Style Plunger Packing – Low Pressure Cast Aluminum Bronze Fluid Cylinder	9
Stuffing Box, Plunger & 242 Style Plunger Packing – Low Pressure Cast Aluminum Bronze Fluid Cylinder	10
Stuffing Box, Plunger & 838 Style Plunger Packing – Low Pressure Block Steel Fluid Cylinder (Hydrocarbon Service)	11
Stuffing Box, Plunger & 838 Style Plunger Packing – High Pressure Block Steel Fluid Cylinder	12
Stuffing Box, Plunger & 242 Style Plunger Packing – High Pressure Block Steel Fluid Cylinder	13
Delrin Disc Valves – Suction & Discharge Valves – Low Pressure Cast Aluminum Bronze Fluid Cylinder	14
Delrin Disc Valves – Low Pressure Block Steel Fluid Cylinder	15
Delrin Disc Valves – High Pressure Block Steel Fluid Cylinder	16
Wing Guided Valve – Aluminum Bronze Without Insert – Low Pressure Block Steel & Cast Aluminum Bronze Fluid Cylinder	17
Wing Guided Valve – Aluminum Bronze Without Insert – High Pressure Block Steel Fluid Cylinder	18
Wing Guided Valve – Steel Without Insert – High Pressure Block Steel Fluid Cylinder	19
Wing Guided Valve – Stainless Steel With Insert – Low Pressure Block Steel & Cast Aluminum Bronze Fluid Cylinder	20
Wing Guided Valve – Stainless Steel Without Insert – High Pressure Block Steel Fluid Cylinder	21
Lubricator & Drive Assembly (Optional Equipment)	22
Optional Equipment	23
Valve Seat Puller – Delrin Disc Type – Low Pressure – Cast Aluminum Bronze or Low Pressure Block Steel Fluid Cylinder	23
Valve Seat Puller – Delrin Disc Type – High Pressure Block Steel Fluid Cylinder	23
Valve Seat Puller – Wing Guided Valves – All Models	23
Gardner Denver Unit Record	Inside Back Cover

For Operating and Service Instructions see:

SERVICE MANUAL 3–1–614

**MODEL TQC – DESIGN VERSION C
OPTION MENU**

TYPE OF SERVICE AND FLUID CYLINDER

- General Service – Low Pressure Cast Aluminum Bronze Cylinder Page 6
- Hydrocarbon Service – Low Pressure Block Steel Cylinder Page 7
- General Service – High Pressure Block Steel Cylinder Page 8

PLUNGER AND PACKING SIZES AND STYLES

- 3" – 1-3/4" with 838 Style Non-Adjustable Packing for use with Low Pressure Cast Aluminum Bronze Cylinder Page 9
- 3" – 1-3/4" with 242 Style Rubber Spring Loaded Packing for use with Low Pressure Cast Aluminum Bronze Cylinder Page 10
- 3" – 1-3/4" with 838 Style Non-Adjustable Packing for use with Low Pressure Block Steel Cylinder Page 11
- 1-1/2" – 1" with 838 Style Non-Adjustable Packing for use with High Pressure Block Steel Cylinder Page 12
- 1-1/2" – 1" with 242 Style Rubber Spring Loaded Packing for use with Pressure Block Steel Cylinder Page 13

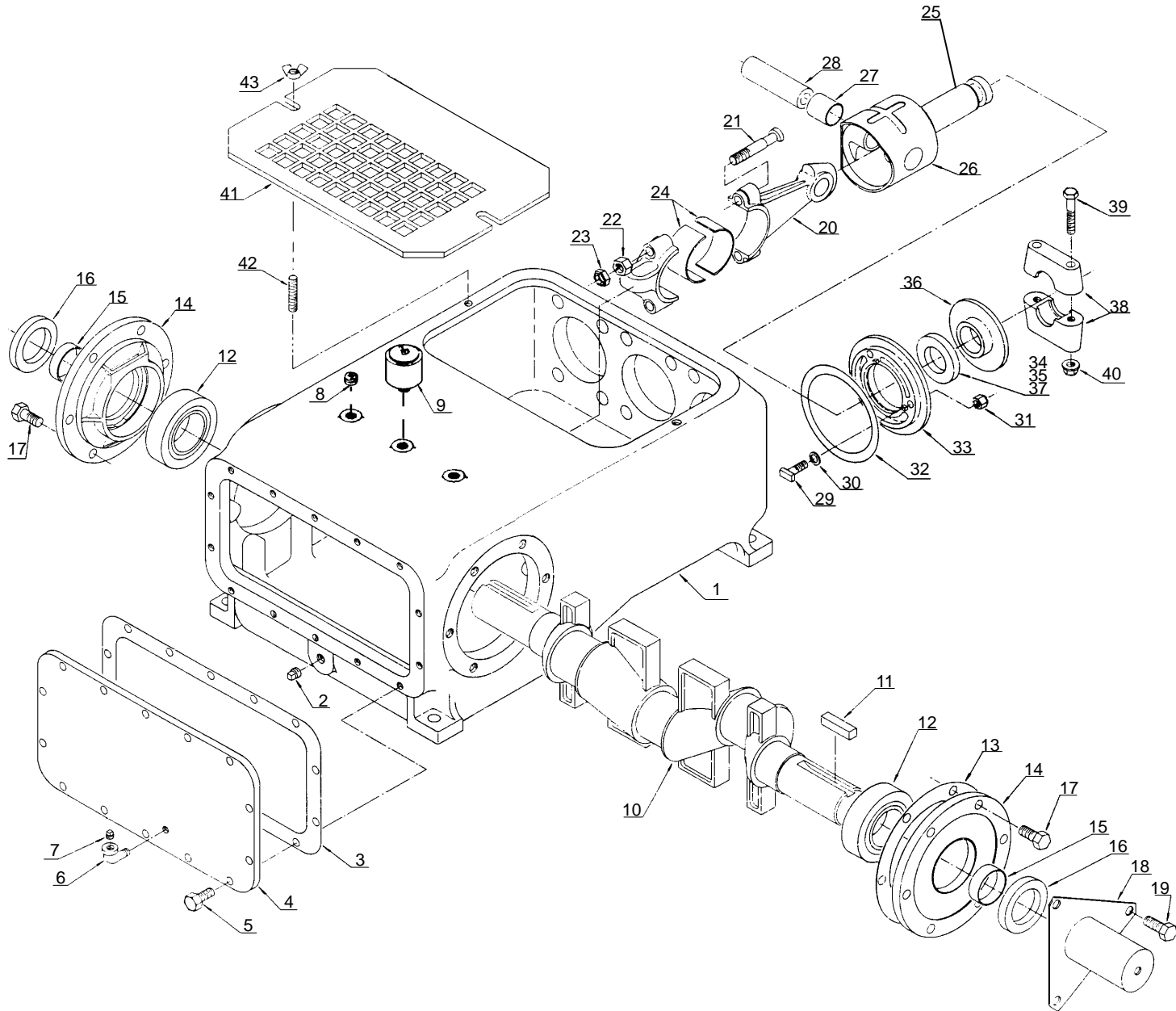
FLUID VALVE SELECTIVE

- **Low Pressure Cast Aluminum Bronze Cylinder**
 - Delrin Disc Valve offered in Aluminum Bronze, Stainless Steel and Monel Page 14
 - Wing Guided Valve – Aluminum Bronze Without Insert Page 17
 - Wing Guided Valve – Stainless Steel With Insert Page 20
- **Low Pressure Block Steel Cylinder**
 - Delrin Disc Valve offered in Aluminum Bronze, Stainless Steel and Monel Page 15
 - Wing Guided Valve – Aluminum Bronze Without Insert Page 17
 - Wing Guided Valve – Stainless Steel With Insert Page 20
- **High Pressure Block Steel Cylinder**
 - Delrin Disc Valve offered in Aluminum Bronze, Stainless Steel and Monel Page 16
 - Wing Guided Valve – Aluminum Bronze Without Insert Page 18
 - Wing Guided Valve – Steel Without Insert Page 19
 - Wing Guided Valve – Stainless Steel Without Insert Page 21

OPTIONAL LUBRICATOR Page 22

OPTIONAL VALVE SEAT PULLER Page 23

POWER END



Order by Part Number and Description. Reference Numbers are for your convenience only.

POWER END

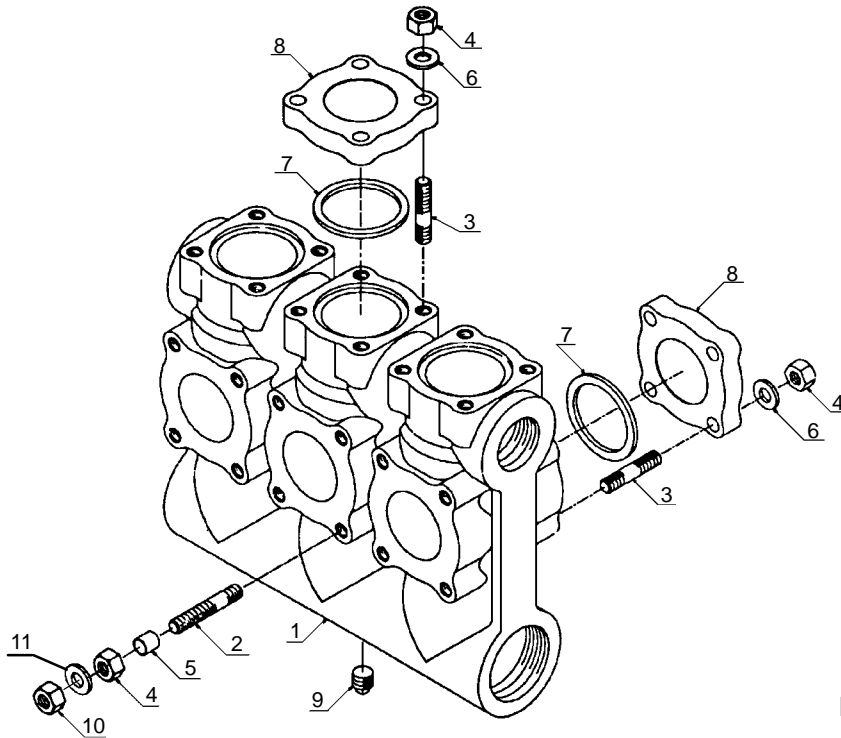
Ref. No.	Name of Part	Qty.	Part No.	Ref. No.	Name of Part	Qty.	Part No.
1	FRAME	1	201TQC001	24	BEARING, Connecting Rod	6	200TQC174
2	PLUG, Oil Drain	1	64AA3	25	EXTENSION ROD, Crosshead	3	200TQC839
3	GASKET, Inspection Plate	1	25C2440	26	CROSSHEAD, Includes Ref. No. 27 ..	3	201TQC005
4	PLATE-INSPECTION	1	202TQC052	27	BUSHING, Crosshead	6	200QBX229
5	SCREW, Inspection Plate	14	75A130	28	PIN, Crosshead	3	62F88
6	ELBOW, Oil Level	1	64D2	29	SCREW, Oil Stop Head	9	PQ1333
7	PLUG, Oil Level	1	64AA5	30	GASKET, Oil Stop Head Screw	9	25A5N
8	PLUG	2	64B4	31	LOCKNUT, Oil Stop Head Screw	9	50V48
9	BREATHER CAP	1	200VQC034	32	GASKET, Oil Stop Head	3	25C2446
10	CRANKSHAFT	1	200TQC004	33	OIL STOP HEAD	3	200QBX051
11	KEY, Crankshaft	1	35B204	34	PACKING, Oil Stop Head	3	60DD102
12	BEARING, Crankshaft	2	12C81	**	RETAINER PLATE, Oil Stop Head Packing	3	200TQC168
13	SHIM, Bearing Housing	1	77G22	36	BAFFLE	3	200TQC840
14	BEARING HOUSING	2	PW366	**	SCREW, Retainer Plate to Oil Stop Head	9	655ED03N
15	WEAR SLEEVE	2	80L7	38	COUPLING-PLUNGER, Includes Reference Numbers 39 & 40	3	200TQC092A
16	OIL SEAL, Crankshaft	2	60G258	39	SCREW, Plunger Coupling	6	655ED14S
17	SCREW, Bearing Housing	12	655EF050	40	NUT, Flanged	6	50AW5
18 *	COVER-SHAFT EXTENSION	1	PW850	41***	INSPECTION PLATE, Stuffing Box Cover	1	201TQC052
19	SCREW, Shaft Extension Cover	3	655EF060	42	STUD, Inspection Plate	2	79A466
20	CONNECTING ROD, Includes Reference Numbers 21 & 22	3	200TQC003	43	WING NUT, Inspection Plate Stud	2	50H1
21	BOLT-CONNECTING ROD	6	2005821	**	PLUG-MAGNETIC	1	64BJ7
22	NUT, Connecting Rod Bolt	6	50AQ26				
23	LOCKNUT, Connecting Rod Bolt	6	50M11				

* Shaft Extension Cover is not required when Lubricator is furnished.

** Not Shown.

*** Not required when Optional Lubricator is furnished. Refer to page 22.

Order by Part Number and Description. Reference Numbers are for your convenience only.



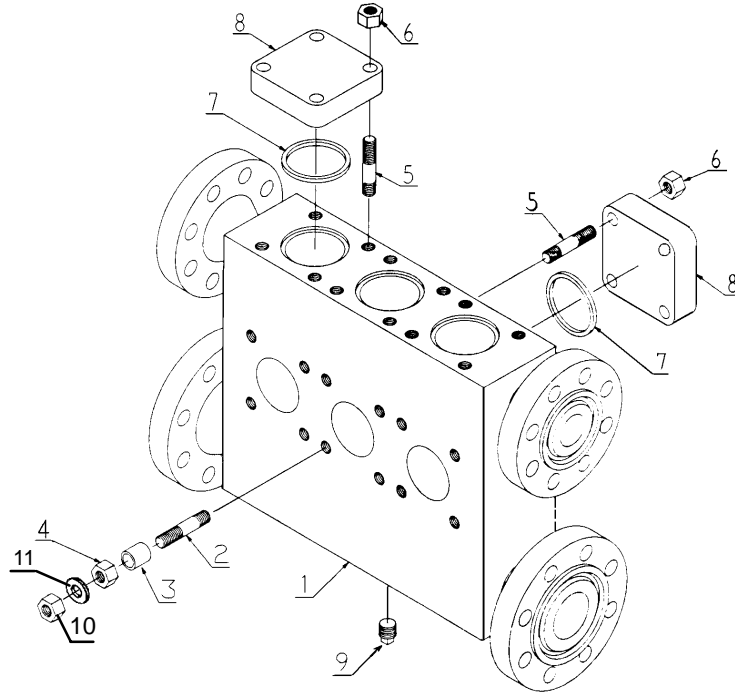
E77113

**LOW PRESSURE CAST ALUMINUM-BRONZE FLUID CYLINDER
(General Service)**

Ref. No.	Name of Part	Qty.	Part No.
1	CYLINDER-FLUID, Includes Reference Numbers 2, 3 & 9	1	200TQC029
2	STUD, Cylinder to Frame & Stuffing Box	12	201TQC110
3	STUD, Cylinder to Valve Cover (Standard Alloy Steel)	24	201TDD110
*	STUD, (Stainless Steel)	24	202TDD110
4	NUT, Frame, Valve Cover	36	50AQ28
5	SPACER, Stud	2	80C43
6	WASHER, Valver Cover Stud	24	95U7
7	GASKET, Hydraulic Ring Valve Cover	6	25AL53
8	COVER-VALVE	6	202TQC147
9	PLUG, Drain	3	64AJ17
10	NUT, Stuffing Box	12	50B5
11	WASHER	12	95U5

* Fluid Cylinder is furnished with standard steel studs. Stainless steel studs may be installed by customer.

Order by Part Number and Description. Reference Numbers are for your convenience only.



D77024

**LOW PRESSURE BLOCK STEEL FLUID CYLINDER
(Hydrocarbon Service)**

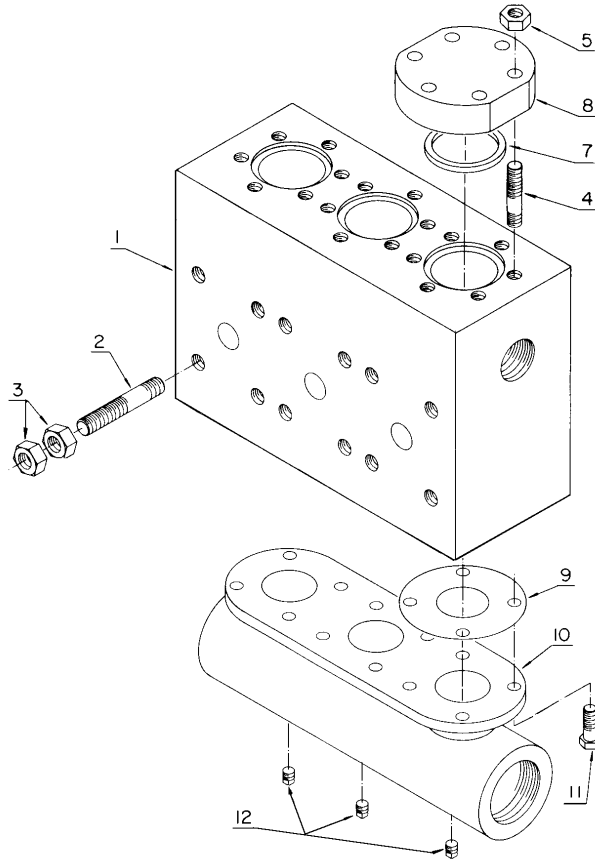
Ref. No.	Name of Part	Qty.	Part No.
1	CYLINDER-FLUID, Includes Reference Numbers 2, 5 & 9	1	201TQC029
2	STUD, Cylinder to Frame & Stuffing Box	12	201TQC110
3	SPACER	2	80C43
4	NUT	12	50B31
5	STUD, Cylinder to Valve Cover	24	79AJ14
6	NUT, Valve Cover	24	50AQ29
7	GASKET-RING, Valve Cover	6	25AL53
8	COVER-VALVE	6	200TAC147
9	PLUG, Drain	3	64AA3
10	NUT, Stuffing Box	12	50B5
11	WASHER	12	95U5

OPTIONAL EQUIPMENT

*	FLANGE-SUCTION	2	65EB379
*	STUD, Cylinder to Suction Flange	16	79L142
*	NUT, Suction Flange	32	50B9
*	FLANGE-DISCHARGE	2	142531
*	STUD, Cylinder to Discharge Flange	16	79L142
*	NUT, Discharge Flange	32	50B9

* Not shown.

Order by Part Number and Description. Reference Numbers are for your convenience only.

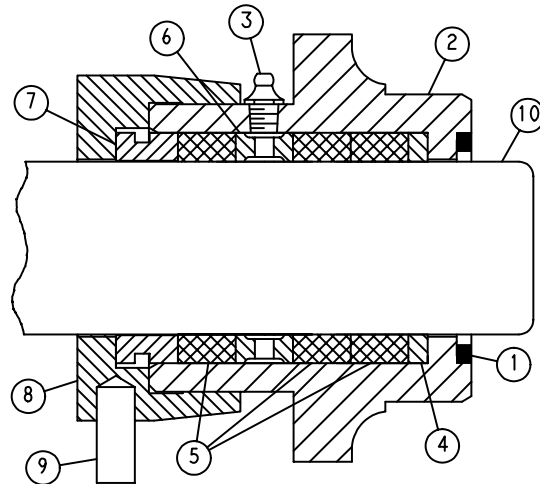


D74886

**HIGH PRESSURE BLOCK STEEL FLUID CYLINDER
(General Service)**

Ref. No.	Name of Part	Qty.	Part No.
1	CYLINDER-FLUID, Includes Reference Numbers 2 & 4	1	7PW29
2	STUD, Cylinder to Frame & Stuffing Box	12	79AK7
3	NUT, Frame & Stuffing Box Stud	24	50B32
4	STUD, Valve Cover	18	79L71
5	NUT, Valve Cover Stud	18	50B9
7	GASKET, Valve Cover	3	25AL39
8	COVER-VALVE	3	PW147
9	GASKET, Suction Manifold to Cylinder	3	25C1466
10	MANIFOLD-SUCTION	1	2PG110
11	SCREW, Suction Manifold to Cylinder	12	655EE040
12	PLUG, Drain	3	64AA7

Order by Part Number and Description. Reference Numbers are for your convenience only.



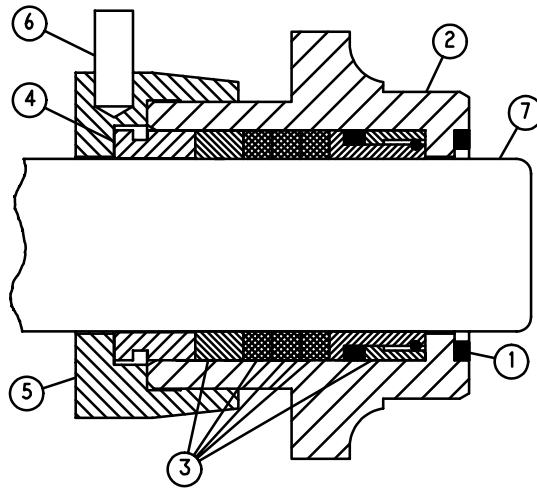
200TQB810-A
(Ref. Drawing)

**STUFFING BOX, PLUNGER & 838 STYLE PLUNGER PACKING
LOW PRESSURE CAST ALUMINUM-BRONZE FLUID CYLINDER**

Ref. No.	Name of Part	Qty.	3" Part No.	2-3/4" Part No.	2-1/2" Part No.
1	GASKET	3	25AL60	25AL60	25AL60
2	STUFFING BOX	3	PW1430	PW1427	PW1427
3	LUBE FITTING	3	40E7	40E7	40E7
	PACKING ASSEMBLY (Incl. Items 4 thru 7) .	3	PS160030	PS160027	PS160025
4	JUNK RING	3	PS31730	PS31727	PS31725
5	PACKING (Style 838)	3	60BU158	60BU100	60BU101
6	LANTERN SPACER	3	PS44530	PS44527	PS44525
7	BUSHING	3	PS15230	PS15227	PS15225
8	GLAND	3	PS113	PS113	PS113
9	PIN	3	62L45	62L45	62L45
10	PLUNGER (Ceramic)	3	PT3830	PT3827	PT3825
10	PLUNGER (Colmonoy)	3	1PT3830	1PT3827	1PT3825
10	PLUNGER (Tungsten Carbide)	3	200TQW038	201TQW038	202TQW038

Ref. No.	Name of Part	Qty.	2-1/4" Part No.	2" Part No.	1-3/4" Part No.
1	GASKET	3	25AL60	25AL60	25AL60
2	STUFFING BOX	3	PW1422	PW1422	PW1417
3	LUBE FITTING	3	40E7	40E7	40E7
	PACKING ASSEMBLY (Incl. Items 4 thru 7) .	3	PS160022	PS160020	PS160017
4	JUNK RING	3	PS31722	PS31720	PS31717
5	PACKING (Style 838)	3	60BU29	60BU97	60BU31
6	LANTERN SPACER	3	PS44529	PS44520	PS44517
7	BUSHING	3	PS15222	PS15220	PS15217
8	GLAND	3	PS113	PS113	PS113
9	PIN	3	62L45	62L45	62L45
10	PLUNGER (Ceramic)	3	PT3822	PT3820	PT3817
10	PLUNGER (Colmonoy)	3	1PT3822	1PT3820	1PT3817
10	PLUNGER (Tungsten Carbide)	3	203TQW038	204TQW038	205TQW038

Order by Part Number and Description. Reference Numbers are for your convenience only.



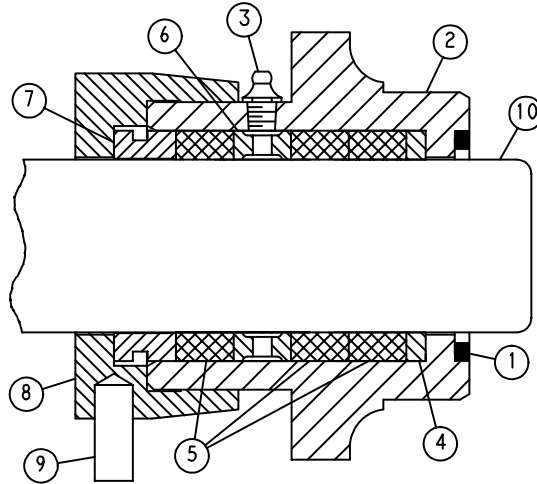
300TQB810-A
(Ref. Drawing)

**STUFFING BOX, PLUNGER & 242 STYLE PLUNGER PACKING
LOW PRESSURE CAST ALUMINUM-BRONZE FLUID CYLINDER**

Ref. No.	Name of Part	Qty.	3" Part No.	2-3/4" Part No.	2-1/2" Part No.
1	GASKET	3	25AL60	25AL60	25AL60
2	STUFFING BOX	3	204TQC014	205TQC014	205TQC014
	PACKING ASSEMBLY (Incl. Items 5 & 7) ...	3	200TQC4060	201TQC4060	202TQC4060
5	PACKING (Style 242)	3	60DD691	60DD670	60DD642
7	BUSHING	3	207TQC152	208TQC152	200TDD152
8	GLAND	3	PS113	PS113	PS113
9	PIN	3	62L45	62L45	62L45
10	PLUNGER (Ceramic)	3	PT3830	PT3827	PT3825
10	PLUNGER (Colmonoy)	3	1PT3830	1PT3827	1PT3825
10	PLUNGER (Tungsten Carbide)	3	200TQW038	201TQW038	202TQW038

Ref. No.	Name of Part	Qty.	2-1/4" Part No.	2" Part No.	1-3/4" Part No.
1	GASKET	3	25AL60	25AL60	25AL60
2	STUFFING BOX	3	206TQC014	206TQC014	207TQC014
	PACKING ASSEMBLY (Incl. Items 5 & 7) ...	3	203TQC4060	201TAE4020	205TQC4060
5	PACKING (Style 242)	3	60DD697	60DD672	60DD673
7	BUSHING	3	PS15222	PS15220	PS15217
8	GLAND	3	PS113	PS113	PS113
9	PIN	3	62L45	62L45	62L45
10	PLUNGER (Ceramic)	3	PT3822	PT3820	PT3817
10	PLUNGER (Colmonoy)	3	1PT3822	1PT3820	1PT3817
10	PLUNGER (Tungsten Carbide)	3	203TQW038	204TQW038	205TQW038

Order by Part Number and Description. Reference Numbers are for your convenience only.



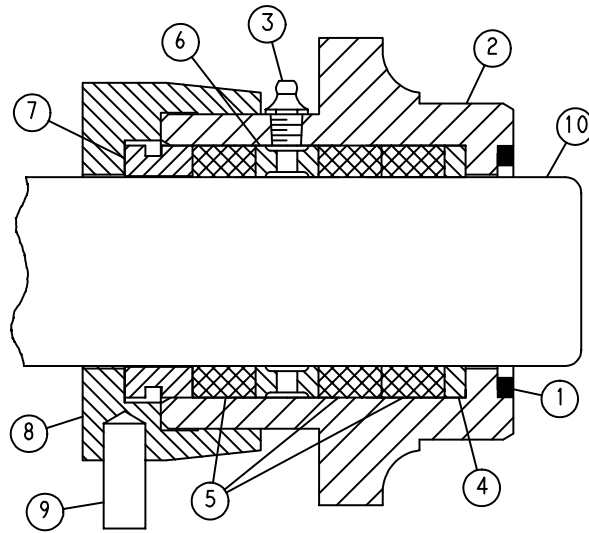
200TQB810-A
(Ref. Drawing)

**STUFFING BOX, PLUNGER & 838 STYLE PLUNGER PACKING
LOW PRESSURE BLOCK STEEL FLUID CYLINDER
(Hydrocarbon Service)**

Ref. No.	Name of Part	Qty.	3" Part No.	2-3/4" Part No.	2-1/2" Part No.
1	GASKET	3	25AL60	25AL60	25AL60
2	STUFFING BOX	3	200TQC014	201TQC014	201TQC014
3	LUBE FITTING	3	40E7	40E7	40E7
	PACKING ASSEMBLY (Incl. Items 4 thru 7) .	3	PS160030	PS160027	PS160025
4	JUNK RING	3	PS31730	PS31727	PS31725
5	PACKING (Style 838)	3	60BU158	60BU100	60BU101
6	LANTERN SPACER	3	PS44530	PS44527	PS44525
7	BUSHING	3	PS15230	PS15227	PS15225
8	GLAND	3	200TQC008	200TQC008	200TQC008
9	PIN	3	62L45	62L45	62L45
10	PLUNGER (Ceramic)	3	PT3830	PT3827	PT3825
10	PLUNGER (Colmonoy)	3	1PT3830	1PT3827	1PT3825
10	PLUNGER (Tungsten Carbide)	3	200TQW038	201TQW038	202TQW038

Ref. No.	Name of Part	Qty.	2-1/4" Part No.	2" Part No.	1-3/4" Part No.
1	GASKET	3	25AL60	25AL60	25AL60
2	STUFFING BOX	3	202TQC014	202TQC014	203TQC014
3	LUBE FITTING	3	40E7	40E7	40E7
	PACKING ASSEMBLY (Incl. Items 4 thru 7) .	3	PS160022	PS160020	PS160017
4	JUNK RING	3	PS31722	PS31720	PS31717
5	PACKING (Style 838)	3	60BU29	60BU97	60BU31
6	LANTERN SPACER	3	PS44529	PS44520	PS44517
7	BUSHING	3	PS15222	PS15220	PS15217
8	GLAND	3	200TQC008	200TQC008	200TQC008
9	PIN	3	62L45	62L45	62L45
10	PLUNGER (Ceramic)	3	PT3822	PT3820	PT3817
10	PLUNGER (Colmonoy)	3	1PT3822	1PT3820	1PT3817
10	PLUNGER (Tungsten Carbide)	3	203TQW038	204TQW038	205TQW038

Order by Part Number and Description. Reference Numbers are for your convenience only.



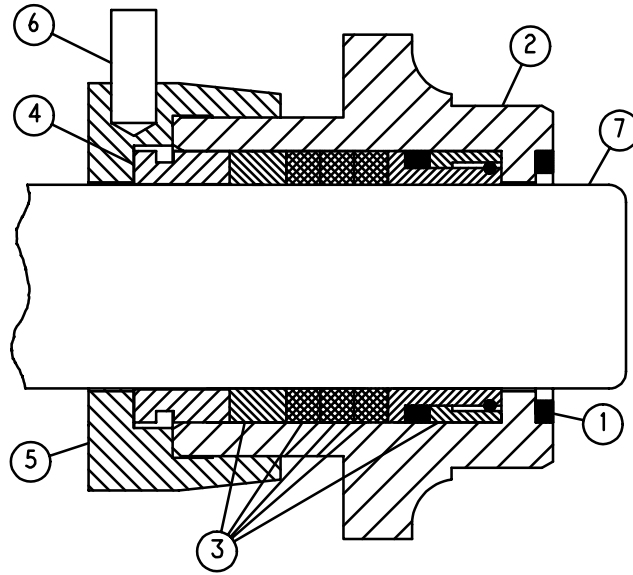
200TQB810-A
(Ref. Drawing)

**STUFFING BOX, PLUNGER & 838 STYLE PLUNGER PACKING
HIGH PRESSURE BLOCK STEEL FLUID CYLINDER**

Ref. No.	Name of Part	Qty.	1-1/2" Part No.	1-1/4" Part No.	1" Part No.
1	GASKET	3	25AL59	25AL59	25AL59
2	STUFFING BOX	3	3PS1417*	223TQC014	223TQC014
3	LUBE FITTING	3	40E7	40E7	40E7
	PACKING ASSEMBLY (Incl. Items 5, 6 & 7) .	3	PS160015	PS160012	PS160010
4	JUNK RING	3	PQ31715	PQ31712	PQ31710
5	PACKING (Style 838)	3	60BU98	60BU33	60BU99
6	LANTERN SPACER	3	PQ44515	PQ44512	PQ44510
7	BUSHING	3	PS15215	PS15212	PS15210
8	GLAND	3	1PQ113	1PQ113	1PQ113
9	PIN	3	62L45	62L45	62L45
10	PLUNGER (Colmonoy)	3	211TQC038	212TQC038	213TQC038
10	PLUNGER (Tungsten Carbide)	3	200TQW038	201TQW038	202TQW038

* Cast Ductile Iron

Order by Part Number and Description. Reference Numbers are for your convenience only.



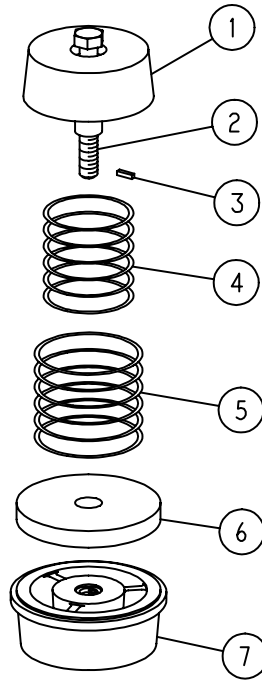
300TQB810-A
(Ref. Drawing)

**STUFFING BOX, PLUNGER & 242 STYLE PLUNGER PACKING
HIGH PRESSURE BLOCK STEEL FLUID CYLINDER**

Ref. No.	Name of Part	Qty.	1-1/2" Part No.	1-1/4" Part No.	1" Part No.
1	GASKET	3	25AL59	25AL59	25AL59
2	STUFFING BOX	3	221TQC014*	222TQC014	222TQC014
	PACKING ASSEMBLY (Incl. Items 5 & 7) ...	3	206TQC4060	207TQC4060	208TQC4060
5	PACKING (Style 242)	3	60DD671	60DD669	60DD675
7	BUSHING	3	PQ15215	206TQC152	PQ15210
8	GLAND	3	1PQ113	1PQ113	1PQ113
9	PIN	3	62L45	62L45	62L45
10	PLUNGER (Colmonoy)	3	211TQC038	212TQC038	213TQC038
10	PLUNGER (Tungsten Carbide)	3	208TQC038	209TQC038	210TQC038

* Cast Ductile Iron

Order by Part Number and Description. Reference Numbers are for your convenience only.



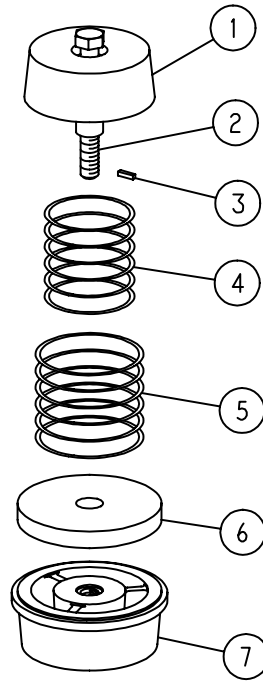
**310TEE810
(Ref. Drawing)**

**DELTRIN DISC VALVES – SUCTION & DISCHARGE VALVES
LOW PRESSURE CAST ALUMINUM-BRONZE FLUID CYLINDER**

Ref. No.	Name of Part	Qty.	Al-Bronze Part No.	Stainless Steel Part No.	Monel Part No.
	FLUID VALVE ASSEMBLY, Incl. Ref. No. 1 thru 7	6	200VLE482	221VLE482	202VLE482
1	RETAINER	6	2010588	2010828	2010590
2	FASTENER	6	2010599	2010599	2010599
3	THREAD LOCK PLUG	6	2010603	2010603	2010603
4	SPRING (Inner)	6	2010606	2010606	2010606
5	SPRING (Outer)	6	2116348	2116348	2116348
6	PLATE-VALVE	6	2010613	2010613	2010613
7	SEAT-VALVE	6	2010632	2010633	2010634

For Optional Valve Seat Puller refer to page 23.

Order by Part Number and Description. Reference Numbers are for your convenience only.



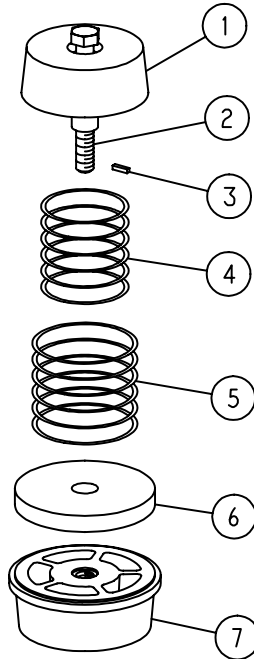
310TEE810
(Ref. Drawing)

**DELTRIN DISC VALVES
LOW PRESSURE BLOCK STEEL FLUID CYLINDER**

Ref. No.	Name of Part	Qty.	Al-Bronze Part No.	Stainless Steel Part No.	Monel Part No.
SUCTION VALVE					
	FLUID VALVE ASSEMBLY, Incl. Ref. No. 1 thru 7	3	200VLE482	221VLE482	202VLE482
1	RETAINER	3	2010588	2010828	2010590
2	FASTENER	3	2010599	2010599	2010599
3	THREAD LOCK PLUG	3	2010603	2010603	2010603
4	SPRING (Inner)	3	2010606	2010606	2010606
5	SPRING (Outer)	3	2116348	2116348	2116348
6	PLATE-VALVE	3	2010613	2010613	2010613
7	SEAT-VALVE	3	2010632	2010633	2010634
DISCHARGE VALVE					
	FLUID VALVE ASSEMBLY, Incl. Ref. No. 1 thru 7	3	210VLG482	211VLG482	212VLG482
1	RETAINER	3	2010588	2010828	2010590
2	FASTENER	3	2010599	2010599	2010599
3	THREAD LOCK PLUG	3	2010603	2010603	2010603
4	SPRING (Inner)	3	2010606	2010606	2010606
5	SPRING (Outer)	3	2116348	2116348	2116348
6	PLATE-VALVE	3	2010613	2010613	2010613
7	SEAT-VALVE	3	2109451	2109452	2109453

For Optional Valve Seat Puller refer to page 23.

Order by Part Number and Description. Reference Numbers are for your convenience only.



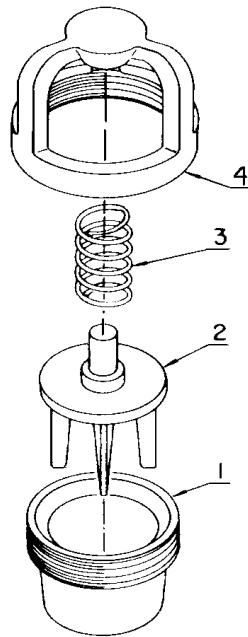
311TEE810
(Ref. Drawing)

**DELTRIN DISC VALVES
HIGH PRESSURE BLOCK STEEL FLUID CYLINDER**

Ref. No.	Name of Part	Qty.	Al-Bronze Part No.	Stainless Steel Part No.	Monel Part No.
SUCTION VALVE					
	FLUID VALVE ASSEMBLY, Incl. Ref. No. 1 thru 7	3	200VHA482	201VHA482	202VHA482
1	RETAINER	3	2010594	2010595	2010596
2	FASTENER	3	2010600	2010600	2010600
3	THREAD LOCK PLUG	3	2010603	2010603	2010603
4	SPRING (Inner)	3	2010606	2010606	2010606
6	PLATE-VALVE	3	2010616	2010616	2010616
7	SEAT-VALVE	3	2010659	2010660	2010661
DISCHARGE VALVE					
	FLUID VALVE ASSEMBLY, Incl. Ref. No. 1 thru 7	3	200VHC482	201VHC482	202VHC482
1	RETAINER	3	2010591	2010592	2010593
2	FASTENER	3	2010600	2010600	2010600
3	THREAD LOCK PLUG	3	2010603	2010603	2010603
4	SPRING (Inner)	3	2010606	2010606	2010606
5	SPRING (Outer)	3	2116348	2116348	2116348
6	PLATE-VALVE	3	2010829	2010829	2010829
7	SEAT-VALVE	3	2010653	2010654	2010655

For Optional Valve Seat Puller refer to page 23.

Order by Part Number and Description. Reference Numbers are for your convenience only.



B74875

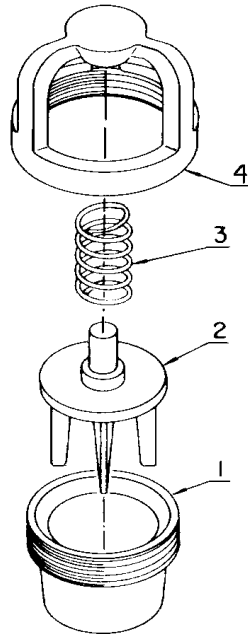
**WING GUIDED VALVE – ALUMINUM BRONZE WITHOUT INSERT
LOW PRESSURE BLOCK STEEL & CAST ALUMINUM BRONZE FLUID CYLINDER**

Ref. No.	Name of Part	Qty.	Part No.
SUCTION			
*	FLUID VALVE ASSEMBLY, Includes Reference Numbers 1 thru 4	3	208VWE482A
1	SEAT-VALVE	3	200VWE039
2	VALVE-FLUID	3	3PG206
3	SPRING	3	78H24
4	CAGE-VALVE	3	200VWC054
DISCHARGE			
	FLUID VALVE ASSEMBLY, Includes Reference Numbers 1 thru 4	3	208VWC482A
1	SEAT-VALVE	3	200VWC039
2	VALVE-FLUID	3	3PG206
3	SPRING	3	78H24
4	CAGE-VALVE	3	200VWC054

* For Low Pressure Cast Aluminum Bronze Fluid Cylinder use this valve for both Suction and Discharge. The required quantity is (6) per pump.

For Optional Valve Seat Puller refer to page 23.

Order by Part Number and Description. Reference Numbers are for your convenience only.



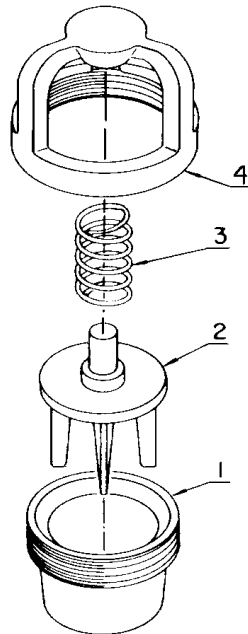
B74875

**WING GUIDED VALVE – ALUMINUM BRONZE WITHOUT INSERT
HIGH PRESSURE BLOCK STEEL FLUID CYLINDER**

Ref. No.	Name of Part	Qty.	TQCE Part No.
SUCTION			
	FLUID VALVE ASSEMBLY, Includes Reference Numbers 1 thru 4	3	208VSA482A
1	SEAT-VALVE	3	200VSA039
2	VALVE-FLUID	3	TA369
3	SPRING	3	78H32
4	CAGE-VALVE	3	200VSA054
DISCHARGE			
	FLUID VALVE ASSEMBLY, Includes Reference Numbers 1 thru 4	3	208VWC482A
1	SEAT-VALVE	3	200VWC039
2	VALVE-FLUID	3	3PG206
3	SPRING	3	78H24
4	CAGE-VALVE	3	200VWC054

For Optional Valve Seat Puller refer to page 23.

Order by Part Number and Description. Reference Numbers are for your convenience only.



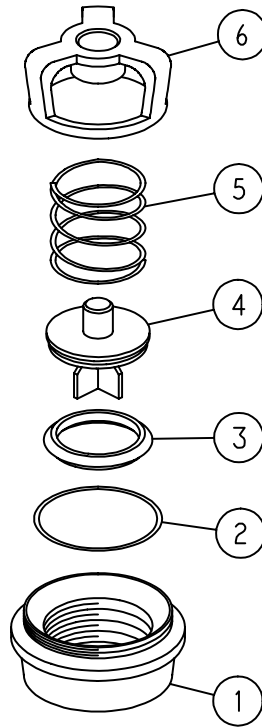
B74875

**WING GUIDED VALVE – STEEL WITHOUT INSERT
HIGH PRESSURE BLOCK STEEL FLUID CYLINDER**

Ref. No.	Name of Part	Qty.	Part No.
SUCTION			
	FLUID VALVE GROUP, Includes Reference Numbers 1 thru 4	3	210VSA482A
1	SEAT	3	201VSA039
2	VALVE	3	1TA369
3	SPRING	3	78H32
4	CAGE	3	201VSA054
DISCHARGE			
	FLUID VALVE GROUP, Includes Reference Numbers 1 thru 4	3	210VWC482A
1	SEAT	3	201VWC039
2	VALVE	3	6PG206
3	SPRING	3	78H22
4	CAGE	3	201VWC054

For Optional Valve Seat Puller refer to page 23.

Order by Part Number and Description. Reference Numbers are for your convenience only.



312TEE810
(Ref. Drawing)

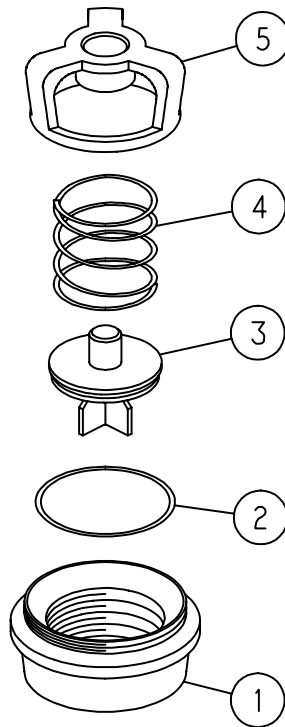
**WING GUIDED VALVE – STAINLESS STEEL WITH INSERT
LOW PRESSURE BLOCK STEEL & CAST ALUMINUM–BRONZE FLUID CYLINDER**

Ref. No.	Name of Part	Qty.	Part No.
SUCTION			
*	FLUID VALVE GROUP, Includes Reference Numbers 1 thru 6	3	200TDE482
1	VALVE SEAT	3	2116351
2	O-RING	3	2116219
3	INSERT	3	2116220
4	VALVE	3	2116354
5	SPRING	3	2116222
6	CAGE	3	2116223
DISCHARGE			
	FLUID VALVE GROUP, Includes Reference Numbers 1 thru 6	3	201TDE482
1	VALVE SEAT	3	2116350
2	O-RING	3	2116219
3	INSERT	3	2116220
4	VALVE	3	2116354
5	SPRING	3	2116222
6	CAGE	3	2116223

* For Low Pressure Cast Aluminum Bronze Fluid Cylinder use this valve for both Suction and Discharge. The required quantity is (6) per pump.

For Optional Valve Seat Puller refer to page 23.

Order by Part Number and Description. Reference Numbers are for your convenience only.



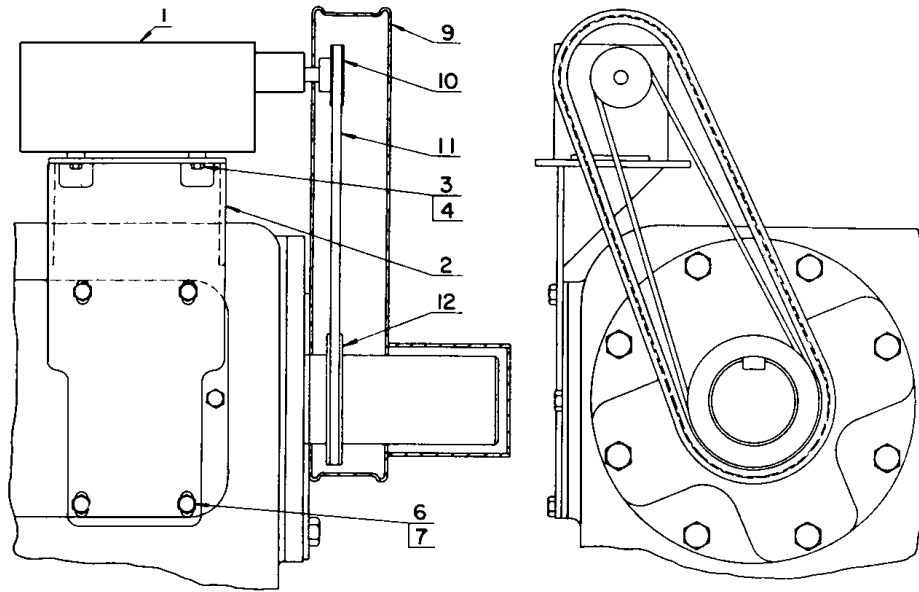
300TQW810-A
(Ref. Drawing)

**WING GUIDED VALVE – STAINLESS STEEL WITHOUT INSERT
HIGH PRESSURE BLOCK STEEL FLUID CYLINDER**

Ref. No.	Name of Part	Qty.	Part No.
SUCTION			
	FLUID VALVE GROUP, Includes Reference Numbers 1 thru 5	3	202TQW482
1	SEAT	3	2116856
2	O-RING	3	2116857
3	VALVE	3	2116858
4	SPRING	3	2116432
5	CAGE	3	2116433
DISCHARGE			
	FLUID VALVE GROUP, Includes Reference Numbers 1 thru 5	3	203TQW482
1	SEAT	3	2116430
2	O-RING	3	2116857
3	VALVE	3	2116858
4	SPRING	3	2116432
5	CAGE	3	2116433

For Optional Valve Seat Puller refer to page 23.

Order by Part Number and Description. Reference Numbers are for your convenience only.



**LUBRICATOR & DRIVE ASSEMBLY
(OPTIONAL EQUIPMENT)**

Ref. No.	Name of Part	Qty.	Units with 838 Style Packing Part No.	Units with 242 Style Packing Part No.
	LUBRICATOR ASSEMBLY, Incl. the Following Items .		200TQC4012	300TQC4012
1	LUBRICATOR	1	40G100	40G100
2	BRACKET-LUBRICATOR	1	200TQC403	200TQC403
3	SCREW	4	75A10	75A10
4	LOCKWASHER, Bracket Screw	4	95B2	95B2
6	SCREW	3	655EF060	655EF060
7	WASHER	3	95F7	95F7
9	GUARD-AUXILIARY, Belt	1	200TQC240	200TQC240
10	SHEAVE	1	73A628	73A628
11	BELT	1	13C15	13C15
12	AUXILIARY SHEAVE ASSEMBLY	1	200TQC195	200TQC195
*	TUBING, Lubricator to Stuffing Box	144"	85D4A	85D4A
*	ELBOW-TUBE	6	86A25	86A25
*	VALVE-CHECK	3	90AR373	90AR373
*	NIPPLE, Stuffing Box to Check Valve	3	63C1	63C1
*	COUPLING, Stuffing Box to Check Valve	3	64BK1	64BK1
*	PLATE-INSPECTION	1	200TQC052	200TQC052
*	TUBE FITTING	3	—	86A61
*	CLAMP	3	—	159378
*	SCREW	6	—	2009368

* Not shown.

OPTIONAL EQUIPMENT

**VALVE SEAT PULLER – DELRIN DISC TYPE – LOW PRESSURE
CAST ALUMINUM BRONZE OR LOW PRESSURE BLOCK STEEL FLUID CYLINDER**

Name of Part	Qty.	Part No.
PULLER GROUP, Includes All Items	1	TQB75352
HEAD-PULLER	1	100E4
HEAD-PULLER	1	100E5
PULLER ASSEMBLY, Includes Following Items	1	TQW75904
PLATE-PULLER	1	202TQC340
WASHER	1	200TAE244
WEDGE	1	200TAE091
ROD	1	200TEE193
NUT	1	200TAE086
WASHER	1	95U14
TAG-INSTRUCTION	1	201TAE304

**VALVE SEAT PULLER – DELRIN DISC TYPE
HIGH PRESSURE BLOCK STEEL FLUID CYLINDER**

Name of Part	Qty.	Part No.
PULLER GROUP, Includes All Items	1	TQC75906
PULLER ASSEMBLY, Includes Next 2 Items	1	205TAE219A
PULLER	1	205TAE219
STUD	1	79L110
PULLER ASSEMBLY, Includes Following Items	1	TQC75905
PLATE-PULLER	1	201TQC340
WASHER	1	200TAE244
WEDGE	1	200TAE091
ROD	1	200TAE193
NUT	1	200TAE086
WASHER	1	95U14
TAG-INSTRUCTION	1	201TAE304

**VALVE SEAT PULLER – WING GUIDED VALVES
ALL MODELS**

Name of Part	Qty.	Part No.
PULLER GROUP, Includes All Items	1	TQC75907
PULLER, Head	1	208TAE219
PULLER ASSEMBLY, Includes Following Items	1	TQC75905
PLATE-PULLER	1	201TQC340
WASHER	1	200TAE244
WEDGE	1	200TAE091
ROD	1	200TAE193
NUT	1	200TAE086
WASHER	1	95U14
TAG-INSTRUCTION	1	201TAE304

GARDNER DENVER UNIT RECORD

The following unit identification plate is provided as a convenience to you, our valued Gardner Denver customer. Please take the time to copy all the information from the actual nameplate of your unit. The model number, date manufactured and serial number will be required when contacting the company or your distributor for information or replacement parts.

DANGER-READ INSTRUCTION MANUAL BEFORE MOVING OR OPERATING UNIT						
MODEL	<input style="width: 90%;" type="text"/>	DATE MFG	<input style="width: 90%;" type="text"/>	SERIAL NO.	<input style="width: 95%;" type="text"/>	
ID NO.	<input style="width: 90%;" type="text"/>	MAX TEMP	<input style="width: 90%;" type="text"/>	C/CASE OIL CAP. GAL	<input style="width: 95%;" type="text"/>	
SERVICE	RATED MAX INPUT BHP	RATED MAX INPUT RPM	RATED MAX PUMP RPM	DISCHARGE MAX PSI W.P. OF FLUID CYL.	SUCTION MAX PSI W.P. OF FLUID CYL.	MAX INPUT RPM AT MAX PRESSURE
CONTINUOUS	<input style="width: 90%;" type="text"/>	<input style="width: 90%;" type="text"/>	<input style="width: 90%;" type="text"/>	<input style="width: 90%;" type="text"/>	<input style="width: 90%;" type="text"/>	<input style="width: 90%;" type="text"/>
INTERMITTENT	<input style="width: 90%;" type="text"/>	<input style="width: 90%;" type="text"/>	<input style="width: 90%;" type="text"/>	<input style="width: 90%;" type="text"/>	<input style="width: 90%;" type="text"/>	<input style="width: 90%;" type="text"/>
DISPLACEMENT & PRESSURE AT RATED RPM, SEE O-M MANUAL FOR ADDITIONAL SPECIFICATIONS						
SIZE	<input style="width: 90%;" type="text"/>	<input style="width: 90%;" type="text"/>	<input style="width: 90%;" type="text"/>	<input style="width: 90%;" type="text"/>	<input style="width: 90%;" type="text"/>	<input style="width: 90%;" type="text"/>
GPM	<input style="width: 90%;" type="text"/>	<input style="width: 90%;" type="text"/>	<input style="width: 90%;" type="text"/>	<input style="width: 90%;" type="text"/>	<input style="width: 90%;" type="text"/>	<input style="width: 90%;" type="text"/>
PSI	<input style="width: 90%;" type="text"/>	<input style="width: 90%;" type="text"/>	<input style="width: 90%;" type="text"/>	<input style="width: 90%;" type="text"/>	<input style="width: 90%;" type="text"/>	<input style="width: 90%;" type="text"/>
INTERMITTENT DUTY MAXIMUM PRESSURE, SEE O-M MANUAL FOR ADDITIONAL SPECIFICATIONS						
PSI	<input style="width: 90%;" type="text"/>	<input style="width: 90%;" type="text"/>	<input style="width: 90%;" type="text"/>	<input style="width: 90%;" type="text"/>	<input style="width: 90%;" type="text"/>	<input style="width: 90%;" type="text"/>
Gardner Denver				PURCHASER ID NO.		<input style="width: 95%;" type="text"/>
2000PA496		Gardner Denver Machinery Inc. Quincy, Illinois			MADE IN USA	
GIVE MODEL, ID NO. AND SERIAL NO. WHEN ORDERING REPAIR PARTS OR SERVICE						

**2000PA496
(Ref. Drawing)**

北京

信德迈科技(北京)有限公司CNMEC Technology
北京朝阳区胜古中路2号金基业大厦201室
邮编：100029
电话：010-8428 2935 13910962635
传真：010-8428 8762
主页：[//www.cnmec.biz](http://www.cnmec.biz)
电子邮件：sales@cnmec.biz

西安

西安嘉岳自动化技术有限公司Garye Automation
地址：西安经开区凤城二路天地时代广场B座23层22312室
邮编：710016
电话：029 - 8610 8648 15319759129
传真：029 - 8610 6806
主页：<http://www.garye.cn>
电子邮件：sales@garye.cn

Gardner
Denver

For additional information contact your local representative or
Gardner Denver Machinery Inc., Customer Service Department,
1800 Gardner Expressway, Quincy, Illinois 62301
Telephone: (800) 682-9868 FAX: (217) 224-7814



Sales and Service in all major cities.

For parts information, contact Gardner Denver,
Master Distribution Center, Memphis, TN
Telephone: (800) 245-4946 FAX: (901) 542-6159

Specifications subject to change without notice.
Copyright 1998 Gardner Denver Machinery Inc.